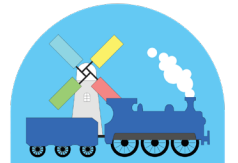




Burston
Primary School



Tivetshall
Primary School



Prospectus

The beginning of your
child's educational journey



Burston and Tivetshall Primary Schools are located in the picturesque villages of Burston and Tivetshall near the town of Diss on the border of Norfolk and Suffolk. Our schools benefit from a truly inspirational community; every child is treated as an individual and our staff give them every opportunity to reach their potential both within the classroom and beyond.

This is a very exciting time for the schools as we embark on a new chapter. We are proud to offer our children a world class education locally.

Our academic and PSHE curriculum is designed to ensure that all our children are equipped with the necessary knowledge, skills and resilience to thrive in the next phase of their education. Our children benefit from a small school where everyone is known and supported for who they are. Our school community is one based on mutual respect and tolerance which celebrates the strengths of each child. We challenge them to be the very best versions of themselves every



day. Our inspirational teaching and support staff create a climate where children want to excel, want to succeed and where challenges are accepted as part of the learning journey.

I hope this prospectus gives a clear insight into what makes Burston and Tivetshall such wonderful places to learn and to thrive. I invite you to visit us however, and to see for yourselves the special places they are and promise to be in the future.

Mrs Karen Millar

"Pupils are proud to be part of this small, rural school. They enjoy coming to school to learn and to be with their friends."

Ofsted





Our Core Values

We are proud of our schools communities. We work hard to ensure our children are provided with the opportunities to flourish in society and to achieve a world class education locally.

Our vision for children at Burston and Tivetshall schools are that they make their MARK:

- ▶ Motivated
- ▶ Ambitious
- ▶ Resilient
- ▶ Kind

Our MARK vision is at the core of everything we do, every lesson we teach and every extra-curricular opportunity we offer. We have high expectations for our children. Hard work, commitment and a willingness to succeed are fostered enabling children to reach their full potential. Every child is given the care, support and guidance to be the best they can be.

Academic Excellence

Our teaching staff are passionate about their subjects, championing them through inspirational learning experiences and a deeply held

value that every student can thrive given the right amount of motivation, praise and challenge.

Curriculum

Our curriculum is ambitious, well planned and sequenced to consistently challenge our children. Every child is provided with the opportunities and support to progress in their academic achievements, as well as enriching and broadening their views and personal development, enhancing their cultural experiences to become confident members of our local and wider community.

The curriculum is designed to be progressive over seven years, building on prior learning, embedding new knowledge and skills whilst also preparing for the next steps of future learning and careers. The ambition and depth of the curriculum encourages our children to explore content beyond what is examined. Reading is encouraged to develop independent learning in our wonderfully resourced libraries meaning that children can access an inspiring array of reading material.

"The curriculum is ambitious for all pupils. Pupils access a wide range of subjects."

Ofsted





EYFS

Our curriculum has been designed to enable children to succeed through cooperative and collaborative learning principles. As such, there is a strong emphasis on the Prime Areas of learning; Personal, Social and Emotional Development and Communication and Language. At our schools, our enabling environments and nurturing, skilful adult interactions support the children as they begin to link learning to their play and exploration right from the start.

We believe that high level engagement ensures high level attainment. We therefore provide an engaging curriculum that maximises opportunities for meaningful cross-curricular links and learning experiences, as well as promoting the unique child by offering extended periods of play and sustained thinking. By the end of the Reception year, our intent is to ensure that all children make at least good progress from their starting points and are equipped with the skills and knowledge to have a smooth transition into Year 1.

Key Stage 1 and 2

At Burston and Tivetshall Primary Schools we are committed to



providing a curriculum which is broad and balanced and provides our pupils with opportunities to gain essential knowledge, skills and understanding. We intend that all children should enjoy their learning, achieve their potential and become independent life-long learners. We will aim high, striving for every child to achieve more than they thought possible. Our curriculum will nurture curious minds, stretch the imagination and provide opportunities for every child to discover their particular talents. We believe that education should take place in a fully inclusive environment with equal opportunities for all where children feel safe to try new things.

"Pupils enjoy respectful relationships with each other and with their teachers. Pupils say that there is no bullying. They are confident that if they have any worries, adults would deal with these."

Ofsted





Pastoral Care

At Burston and Tivetshall Primary Schools, we pride ourselves on the pastoral support offered to our children. Our small size and mixed year classes mean every pupil can build friendships beyond their immediate year group.

Our teachers oversee day-to-day communication with parents and carers, and ensure that the children feel happy, safe and confident to approach them with any concerns in the first instance.

Our assembly structure helps to develop social solidarity where pupils feel a sense of belonging to something tangible and powerful within their community. We encourage children to embark on community and charity projects, developing their social awareness and positive relationships.

Personal Development

Allowing our children to develop is an integral part of our vision. Our PSHE curriculum educates children on how to stay safe and how to be an effective learner. It also encourages the skills of independence, teamwork, empathy and decision making. It is not formally assessed, but progress is informally tracked through questioning and through the class online books.

PSHE is timetabled weekly across EYFS / Key stage 1 / Key stage 2 in addition to daily assemblies which include times for self reflection. We also in our PSHE lessons cover the statutory Relationships and Sex Education.

“Pupils access a wide range of opportunities outside of the main curriculum. These contribute successfully to their personal development and include the personal, social and health education curriculum as well as extra-curricular activities.”

Ofsted





Pupil Voice

Burston and Tivetshall schools both have vibrant school councils. We encourage as many children as possible to become involved, helping develop their leadership skills. The councils meet fortnightly, providing an opportunity for the children to share their ideas, views and moans (!) and be part of the process of continual school improvement.

There are many leadership opportunities available to the pupils including Eco-council, Play-leaders, Sports Captains, Reading buddies and Library monitors.

From their first day our children are challenged to consider ways they can help others and engage with systems of debate and conversation in order to make positive changes.

Extra-Curricular Trips and Activities

Extra-curricular activities, trips and visits are a vital part of our provision. As part of the 'World Class Education' we deliver to our children, we consider these enrichment activities to be of

equal importance to our academic provision.

Extra-curricular activities and trips are essential for our children. The value of new experiences, new cultures, new people and new ideas are immeasurable for the development of the enquiring minds and critical thinking we are so passionate about.

We are proud of the beautiful, safe and welcoming rural location of our schools, but we are also aware that there is a need for pupils to move beyond our local community to ensure they have a well-rounded understanding of the world.

Recent opportunities have included:

- ▶ Norfolk Show
- ▶ Adventurous Activities Residential
- ▶ Gresham Hall
- ▶ Talent showcase
- ▶ Visits to local religious centres
- ▶ Sporting opportunities

We are fortunate that our committed and dedicated staff are so keen to offer clubs for such a rich diverse range of interests catered for across the year.

"Pupils rise to the high expectations that leaders and teachers have of them. They have very positive attitudes to learning and conduct themselves well at all times."

Ofsted





Burstons Primary School

Crown Green
Burstons
Norfolk IP22 5TZ

01379 741256
office@bps.set.education

Tivetshall Primary School

School Road
Tivetshall St Mary
Norfolk NR15 2BP

01379 677350
office@tps.set.education

www.burstons-tivetshall-schools.co.uk